

Installing the Mobile Undercarriage App

You will need to download the file which is available on the Undercarriage website. Open the website on your mobile device, and navigate to the “Download Android App”. We recommend following steps straight from the mobile device. For information on using the Mobile Application see ‘[Record an Inspection – Mobile App](#)’

**NOTE* For all Apple devices, please navigate to the App Store to download*

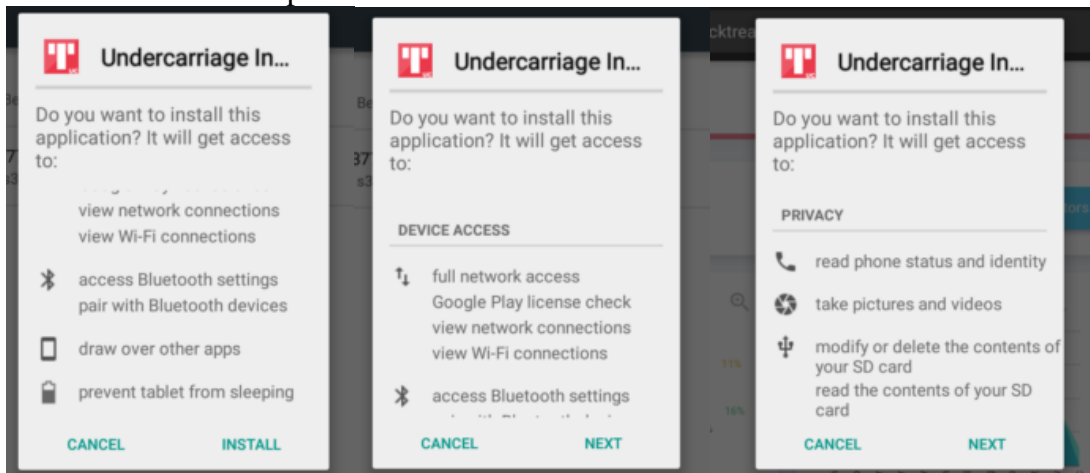
Download the App from the menu item:- Inspections > Download Android App

[Installing Mobile App Video](#)

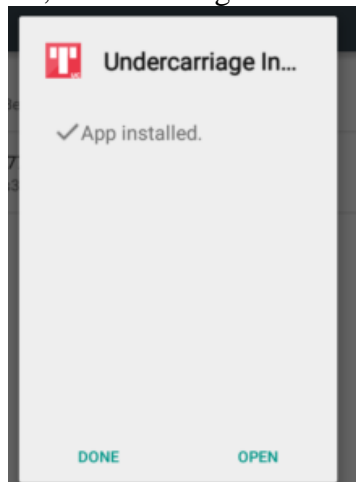
1. When prompted, click "DOWNLOAD"

NOTE If your device is setup to block installations you will need to “allow” this in your settings. Go to Settings > Lock Screen and Security > Unknown Sources>Set this to allow installation from other sources.

2. Continue to Install as per the below screens.



3. Once Installed, the following screen will be shown.



4. If you did not click the open button, then search for the Undercarriage Inspection Icon somewhere on your screen and tap this to open the application.



5. Login with username and password.

A screenshot of a login form. At the top, it says 'Login' in white on a black background. Below that is a red logo consisting of five vertical bars of varying heights. There are two input fields: one for 'username' with a person icon and one for 'password' with a lock icon and a toggle eye icon. Below the password field is a dropdown menu labeled 'Please Select Site' with a minus sign and a question mark. There is a 'Remember Me' checkbox with a red circle and the text 'Remember Me'. At the bottom is a large red button labeled 'LOGIN'.

- Enter your Username, the same as for the cloud system.
- Enter your Password, again same as for the Cloud system.
- Select your site code - this is found in the "About" Menu Item on the Cloud System
- Tick the circle to remember you. (If you do not tick this, you will be unable to work offline).
- Click the login button -> The application will now open, and select the type of Inspection you are about to complete.