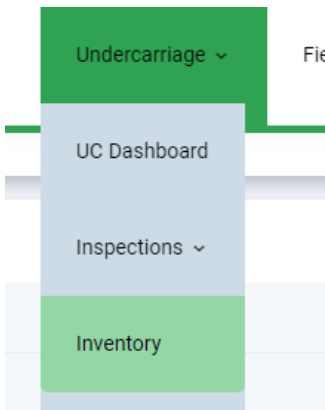


Creating Actions – in Inventory

Find the Chain or Frame you would like to create an action on, using the following screen.



Use the search criteria to help you find the correct piece of Inventory

Search

Select Customer

QA Customer

Select Job Site

QA Jobsite

Select Make

Select Model

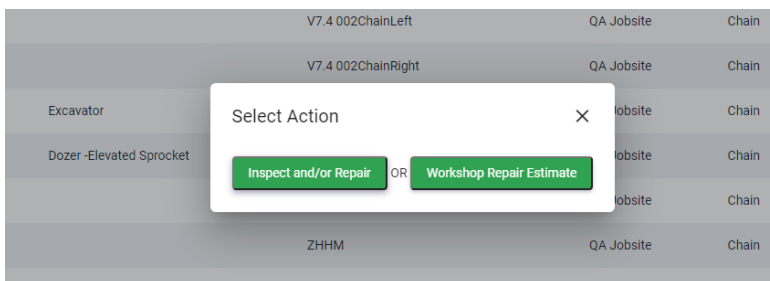
Filter By Serial Number

☐ Include Inventory on Equipment

Reset

Search

Then click on the line and select the option “Inspect and/or Repair”



This will open a popup showing the components that are on that Frame or Chain

Details 011

COMPONENTS		HISTORY		NOTES		RELOCATE SYSTEM					
Component	Make	CMU (hrs)	Measurement	Tool	%Worn	Condition	Budget	Latest Action	Latest Action Date	Total Cost	Record Action
Link - Standard	CATERPILLAR	0	0	UT	0.0	U	6000	No action taken	Never	\$0.00	
Bushing - Sealed & Lubricated	CATERPILLAR	0	0	UT	0.0	U	6000	No action taken	Never	\$0.00	
Shoe - Extreme Service	CATERPILLAR	0	0	UT	0.0	U	6000	No action taken	Never	\$0.00	

Click on the pencil icon to create an action as per below and enter any information that you would like to record, then click on Record Action.

Action On Bushing - Sealed & Lubricated

×

Action

Turn Pins & Bushings

▼

Actions At Cmu

125

Part Cost

5000

Labour Cost Option

Dollar

▼

Labour Cost

0

Misc Cost

0

Total Cost : \$5,000.00

Date of Action

4 Apr 2022

📅

Comment

test

⌨

Cancel

✓ Record Action

This change is then reflected in the components tab as shown on the Idler below

Link - Outer Tube	HITACHI	0	0	Eval	0.0	U	2000	No action taken	Never	\$0.00	
Idler - Front Idler Flange Height	HITACHI	0	0	Depth Gauge	0.0	U	0	Repair Component	04/Apr/2022	\$6.00	✎
Sprocket - Standard	HITACHI	0	0	Ruler	0.0	U	6000	No action taken	Never	\$0.00	✎