

## Loading Equipment and Conducting a Mobile Inspection

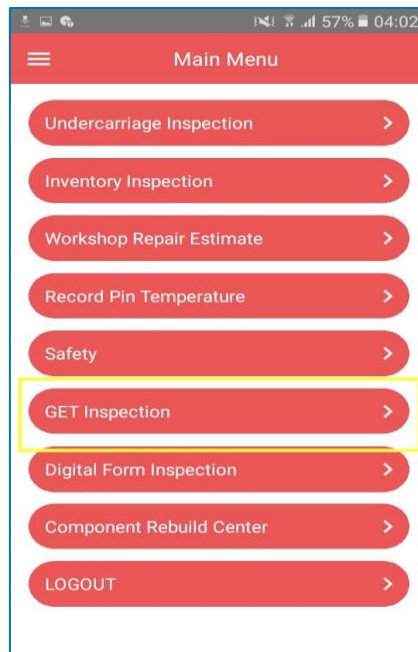
### 1. Load the Equipment

#### 1. Log in to the App

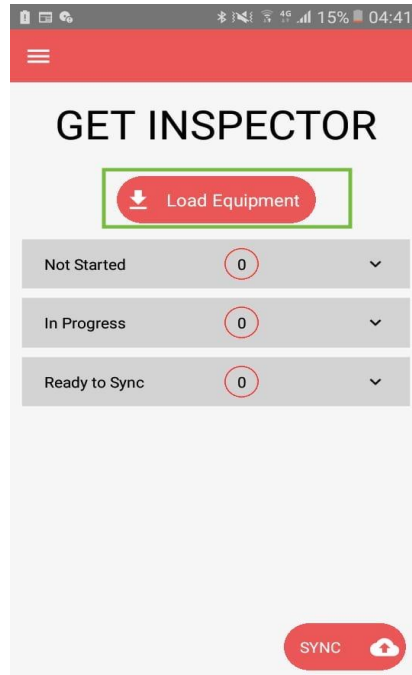
- Open the **TrackTreads Inspections** app on your mobile device.
- Log in using your web username and password.

#### 2. Access the GET Inspection

- On the main screen, navigate to **GET Inspection**.

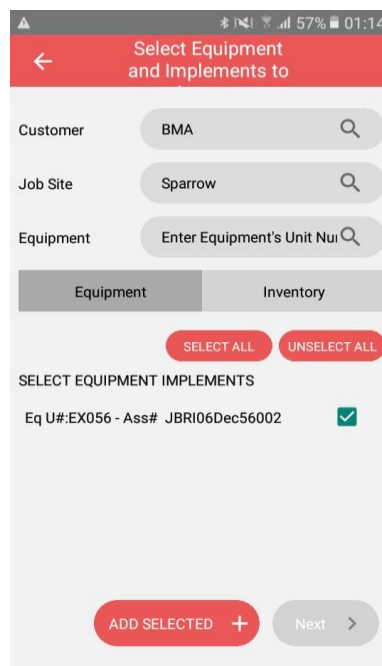


- Tap **Load Equipment** to access the equipment selection screen.

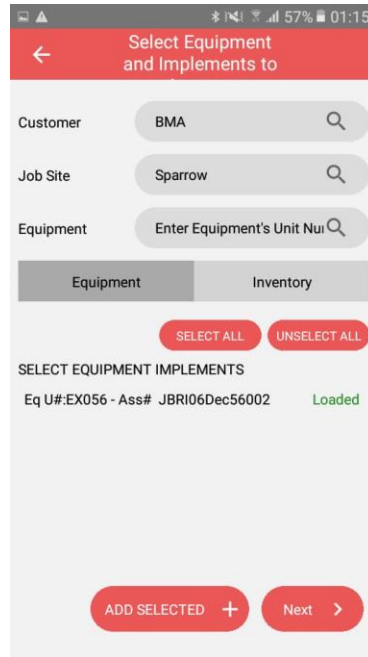


### 3. Select Equipment

- From the list, select the equipment you wish to inspect. Use the search bar to quickly locate specific Select the Customer Name, Select the Job Site Located at, Select the equipment you want to inspect/Examine



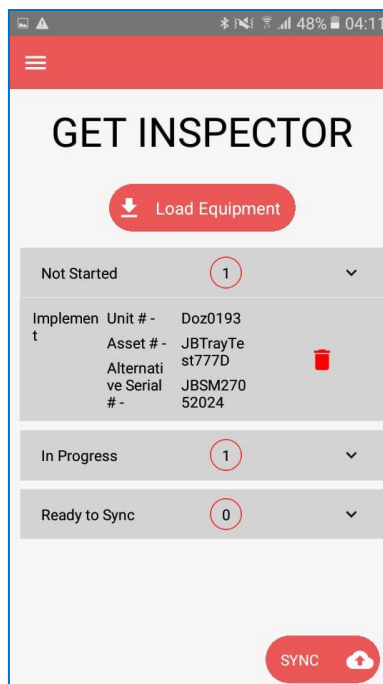
- After selecting, tap **Add Selected** and wait for the screen to load.



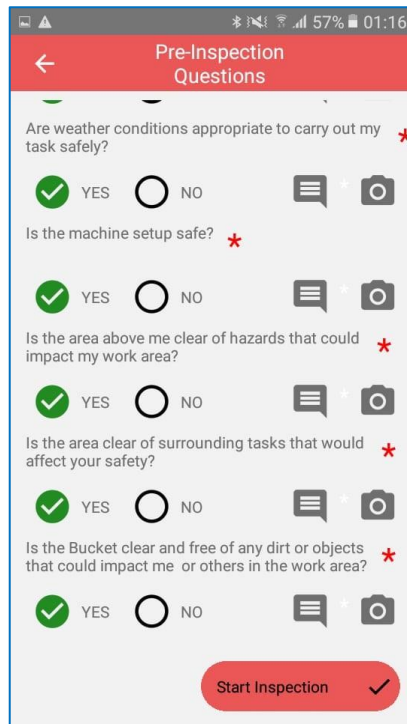
- Once loaded, tap **Next** to start the inspection.

## 2. Perform a mobile inspection

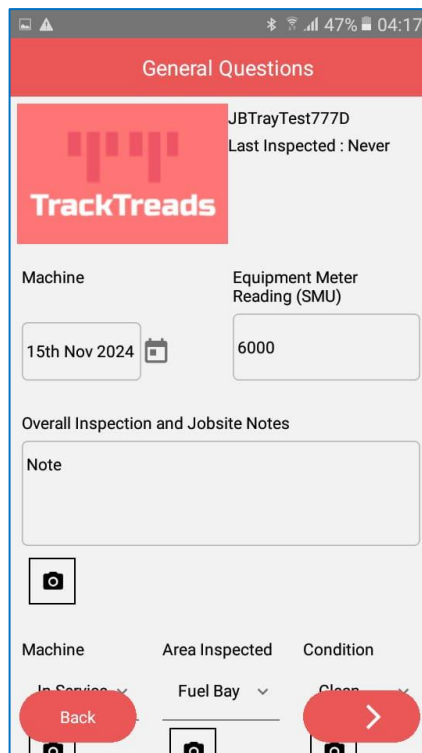
You will now notice on the inspection page under the **Not Started** section is your number of equipment loaded click on it and select an equipment to inspect.



Click on it and it will open the Pre-Inspection Question Complete it and the start inspection button will appear



Once you start the inspection there will be the general information about your equipment/ machine please enter any relevant information and click the next arrow to proceed to the inspection.



## Measure All Points



- **Follow the Checklist**
  - Begin the inspection by following the checklist provided. Each prompt will guide you through the required measurement points.
- **Input Measurements**
  - Measure each inspection point as prompted and record the value in the app.
  - Double-check each entry for accuracy.

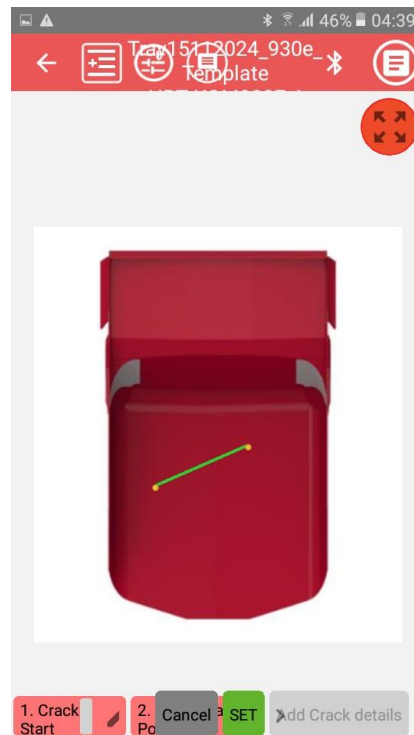
### Add Images, Comments, and Flags

- **Capture Images**
  - For each inspection point, tap the **Camera Icon** to capture a photo.
  - Ensure the camera is positioned to clearly capture the inspection area.
- **Add Comments**
  - Tap the **Comments** section below each inspection item to enter notes. Provide detailed observations (e.g., "minor wear detected").
- **Flag Issues**
  - Use the **Flag** option to mark items requiring attention, helping prioritize repairs or maintenance.

## Add Cracks

- **Identify and Document Cracks**

- If cracks are identified, navigate to the **Obs.Point/Crack** section on your screen.
- Tap **Obs.Point/Crack** to log details, including location, size, and any relevant observations.



Once done drawing your crack the add crack details become enabled. Click it to add it to the inspection

- Attach images to provide clear documentation of the crack.



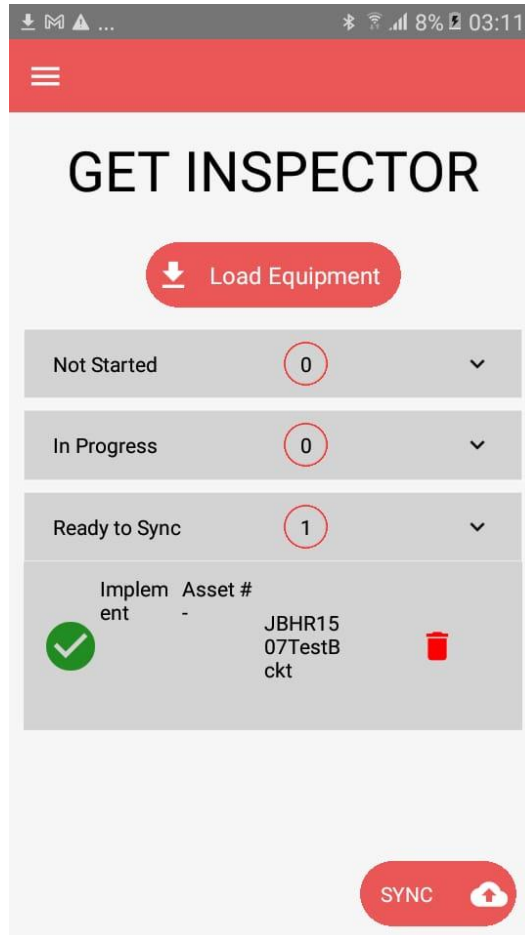
## Finish and Sync Data

### 1. Complete the Inspection

- Once all points are measured, images attached, comments added, and cracks recorded, tap **Done** to complete the inspection.

### 2. Sync Data

- When your equipment is done with all the measurement and inspection you wanted to do click on Ready to sync and select the equipment that's there



- Ensure your device is connected to the internet.
- Tap **Sync** to upload the inspection to the web app application.
- Confirm the sync by checking if the is exported file. Or the changes occurred on the web Portal.